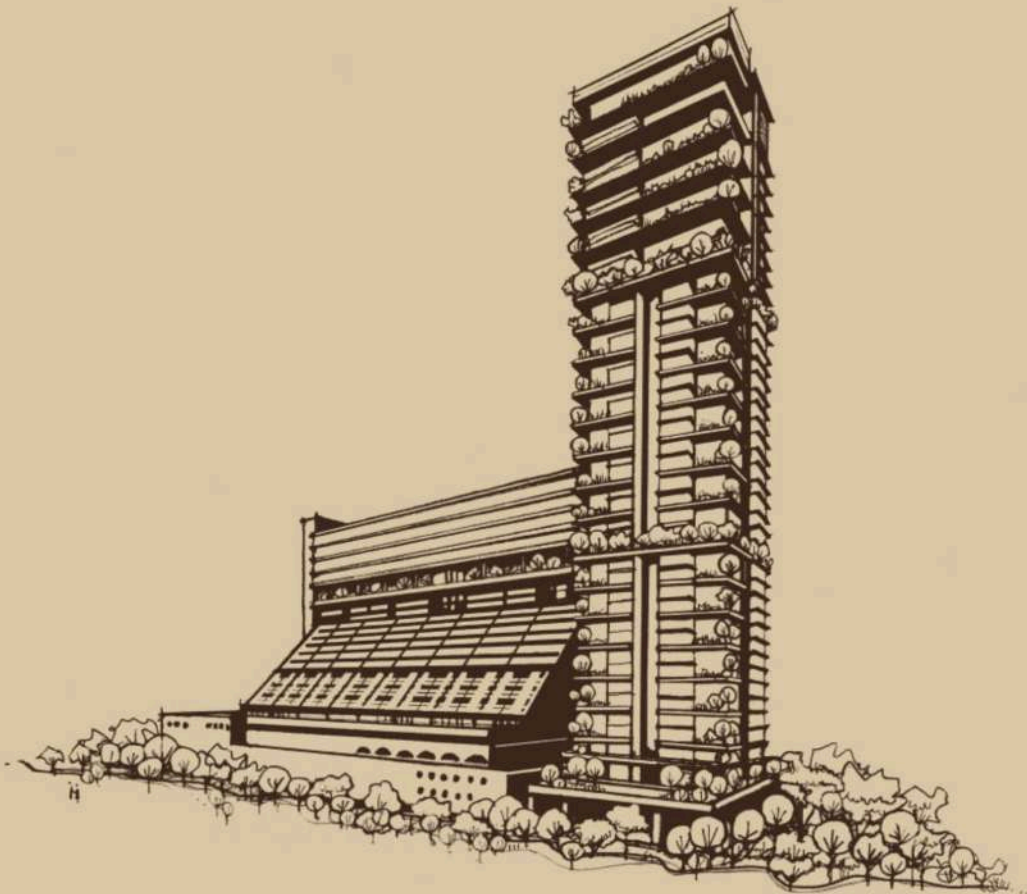


PropNex.com

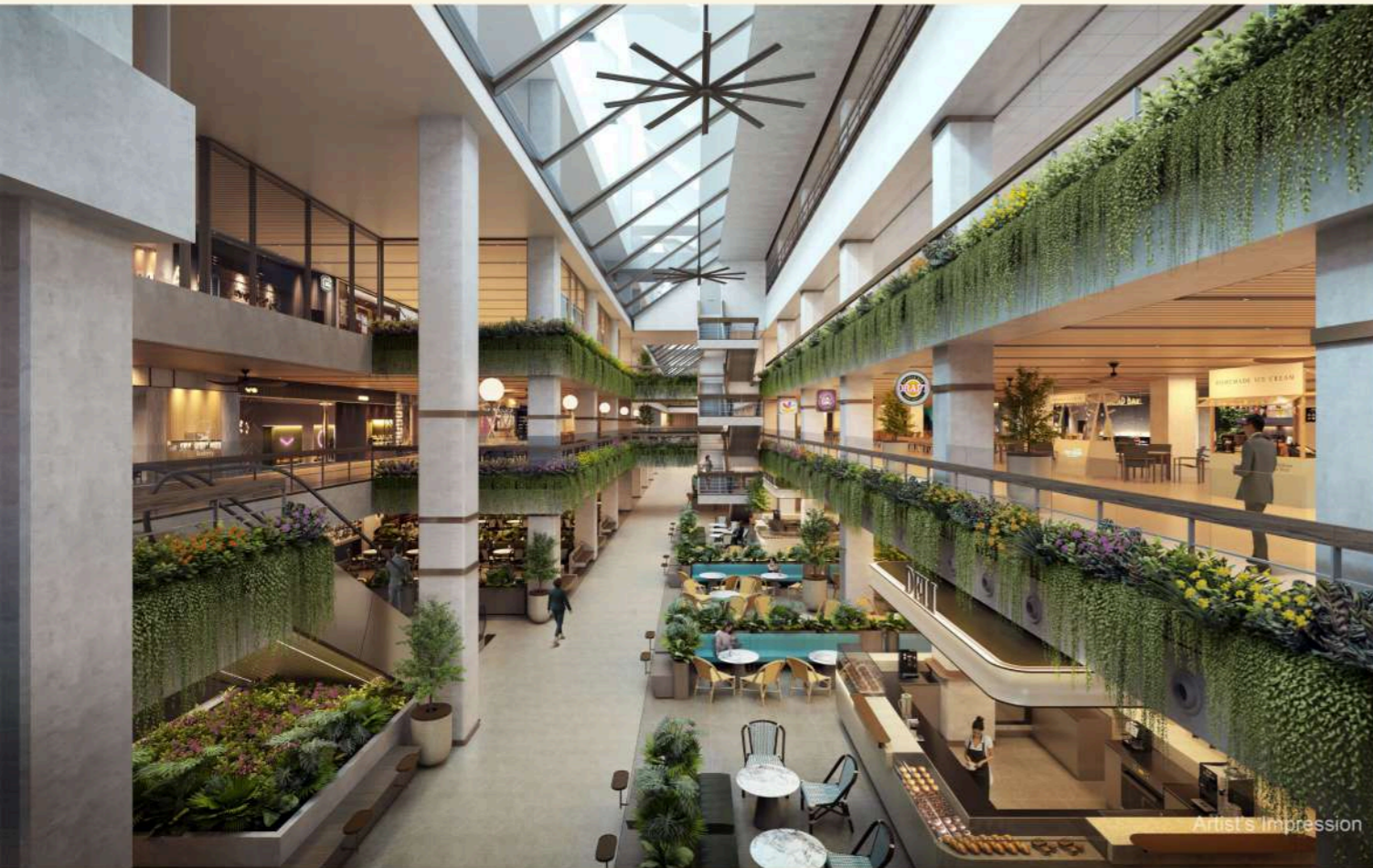
THE GOLDEN MILE



Vol 1.0

Singapore's first large-scale strata-titled conserved building that preserves its iconic identity as a tropical linear urban complex with brutalist architecture





REFRESHED LIVE • WORK • PLAY

Program and Zoning

Designed for Continual relevance, Evolving Needs & Aspirations.

Live, Work, Play @ The Golden Mile

Comfort & Hybridized. Third place, Adaptability & Collaborative Streets, Marketplace & Experiential.

Wellness, Connect @ The Golden Mile

Arch Centre Integration, public education platform, wellbeing-focused design.

CITY ROOM & GARDEN ROOMS

Active Streetscape

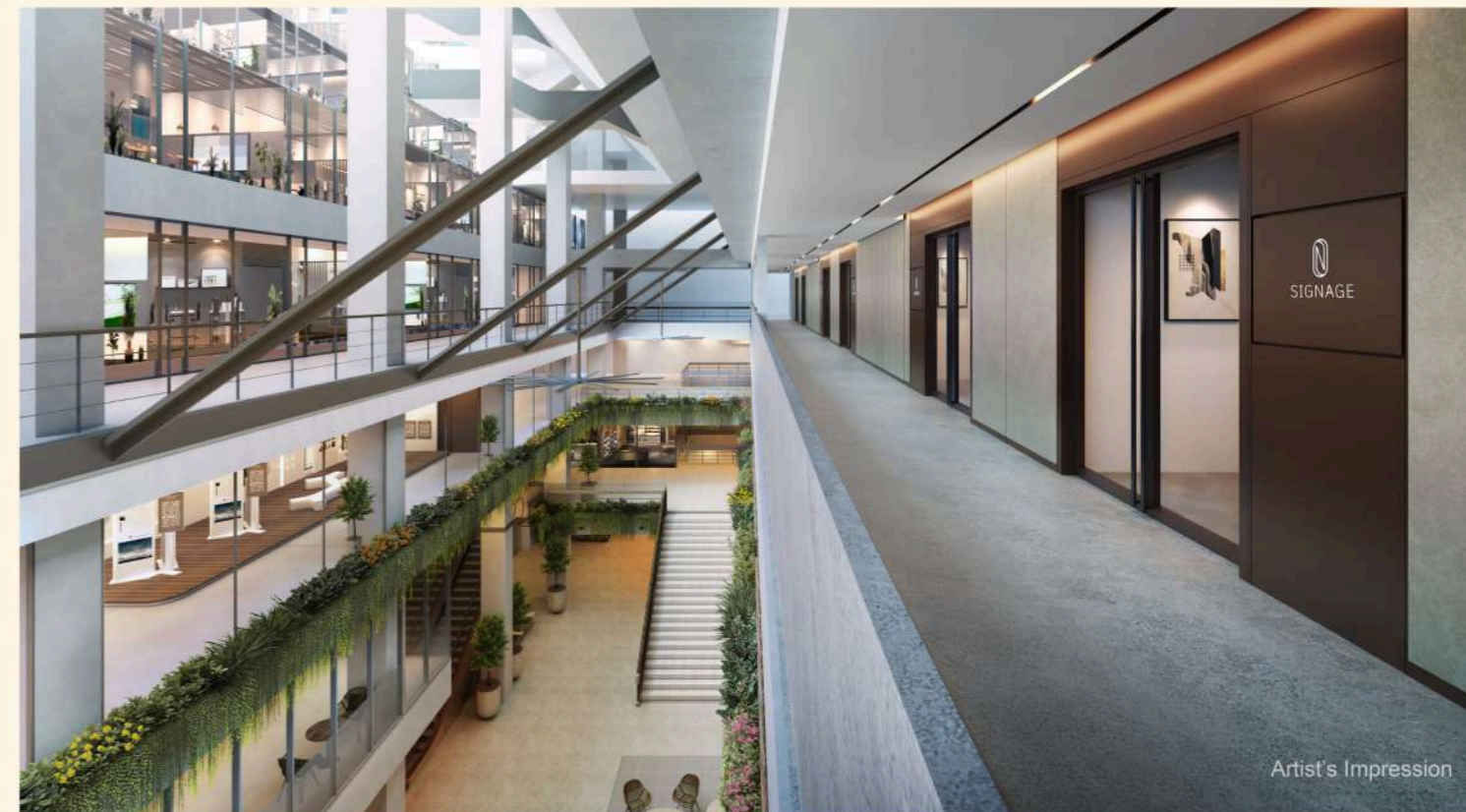
Live well & green in the bustle of a city. Embracing a piece of history & heritage

Pedestrian & Vehicular Connectivity

Inclusivity & Accessibility through a Porous Edge Clarity in vertical connection

Artia & Terraces

Enliven Public Realms and Foster Social Connection





TREASURED ICON 2.0

Crown Office

Vision of Golden Mile Complex Distinctive Old and New

Residential Annex

Premier Residential Living between Modern and Historic

Dynamic & Inclusivity

For the city and communities another 50 years on



CONVENIENCY & CONNECTIVITY

Strategically located near premier MICE venues such as Sands Expo & Convention Centre and Suntec Singapore Convention & Exhibition Centre, major hospitals including Raffles Hospital and Farrer Park Hospital, and luxurious hotels like Capitol Kempinski Singapore and Raffles Hotel, The Golden Mile offers unmatched convenience for companies and medical practitioners. Its easy access to major expressways like Kallang-Paya Lebar Expressway, East Coast Parkway, and the Nicoll Highway MRT station and Lavender MRT station, makes commuting to Changi International Airport, Orchard Road, Central Business District and all of Singapore a breeze. After-work activities are abundant for those working in the building, from enjoying sport, leisure and recreational activities at the nearby Kallang lifestyle hub, Singapore Indoor Stadium and Gardens By The Bay, to dining in restaurants within The Golden Mile or nearby eateries at CHIJMES, Capitol Singapore, Kampong Glam and Marina Bay Shoppes.



THE GOLDEN MILE

Singapore's first large-scale strata-titled conserved building that preserves its iconic identity as a tropical linear urban complex with brutalist architecture

PropNex.com

Level 19 to 22
Crown Offices
 • size range from 3,315sqft to 5,393sqft

Level 18
Sky Garden

Level 16 & 17
Enterprise Offices
 • size range from 1,815sqft to 3,122sqft

Level 10 to 15
Loft Mezzanine
 • level 6 to 15
 • 5.4m high double-volume ceiling
 • size range from 1,528sqft to 2,799sqft

Level 9
Sky Terrace

Level 4 to 8
Loft Suites
 • level 4
 • size range from 958sqft to 2,034sqft

Flagship Offices
 • level 3 to 7
 • size range from 1,378sqft to 4,682sqft

Loft Executive
 • level 5
 • size range from 710sqft to 926sqft

Loft Mezzanine
 • level 6 to 15
 • 5.4m high double-volume ceiling
 • size range from 1,528sqft to 2,799sqft

Level 3
Medical
 • level 3
 • 19 units
 • size range from 506sqft to 2,454sqft

Flagship Offices
 • level 3 to 7
 • size range from 1,378sqft to 4,682sqft

Architecture Centre
 • level 3
 • approx. 2,322sqm / 24,994sqft

Level 1 to 2
Retail and F&B
 • approx. 11,463sqm / 123,388sqft

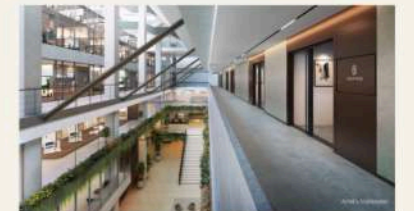
Basement Carpark
 • 173 lots, 3 accessible lots
 • 2 loading/unloading lots



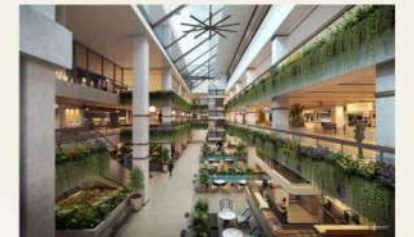
The newly built Crown Offices will take up the top four floors of The Golden Mile



The rooftop level on the 18th floor will be turned into a public access sky terrace



An artist impression of the Loft Suite offices looking down onto the retail atrium.



An artist impression of the new two-storey retail at Golden Mile Singapore.

• 22 Storey Conservation Commercial Building
 • 156 Office Units

• 19 Medical Suites
 • 123,388sqft of 2 Storey Retail Component

*Info correct as of 12 Dec 2024 and subject to change without notice



Perennial Holdings Private Limited (“Perennial Holdings”) is an integrated real estate and healthcare company headquartered in Singapore. As a real estate owner, developer and manager, Perennial Holdings focuses strategically on large-scale transit-oriented developments (“TODs”) and has a presence in China, Singapore, Malaysia and Indonesia with a portfolio spanning approximately 80 million square feet in total gross floor area. As a healthcare services owner, operator and manager, Perennial Holdings focuses on hospitals and medical centres, healthcare hubs, and eldercare and senior housing. In China, it has a presence across 13 cities with over 23,000 beds, comprising about 13,000 operational beds and over 10,000 beds in the pipeline. In Singapore, it will operate the country’s first private assisted living development with over 300 beds. Perennial Holdings’ network of healthcare facilities includes general, rehabilitation and specialist hospitals, as well as assisted living apartments, eldercare and nursing homes, and its integrated eldercare services comprise medical, nursing, rehabilitation, dementia and home care.

Perennial Holdings’ portfolio in China comprises five High Speed Railway (“HSR”) TODs which are situated adjacent to five of the country’s largest HSR stations. These include healthcare-centric HSR TODs with eldercare, medical care and hospitality components, namely Chengdu East HSR Integrated Development, Perennial International Healthcare and Business City (Tianjin South HSR Station), Perennial International Healthcare and Business City (Kunming South HSR Station) and Perennial International Healthcare and Business City (Xi’an North HSR Station), as well as one commercial-centric HSR TOD, being Hangzhou West HSR Integrated Development. Another landmark commercial TOD includes Beijing Tongzhou Integrated Development.

In Singapore, Perennial Holdings’ portfolio comprises iconic properties, such as The Skywaters, Golden Mile Singapore, Capitol Singapore, CHIJMES, Perennial Business City and Caldecott Hill, located in the prime city and suburban districts near transportation hubs. It is also the developer and operator of Parry Assisted Living Care, a new housing-cum-care model development at Parry Avenue.

DEVELOPERS



Far East Organization is a Christian Enterprise, which develops real estate and operates businesses by serving with grace, love, integrity and honesty. Together with its Hong Kong-based sister company Sino Group, they are one of Asia’s largest real estate groups, with operations in Singapore, Malaysia, Australia, Japan, Hong Kong and China. Far East Organization is the largest private property developer in Singapore, having developed over 780 developments across all segments of real estate including 55,000 private homes in Singapore since its establishment in 1960. Far East Organization includes three listed entities: Far East Orchard Limited, Far East Hospitality Trust and Yeo Hiap Seng Limited. Far East Organization is the winner of 14 FIABCI World Prix d’Excellence awards, the highest honour in international real estate.



Official Marketing Agency

PropNex.com

DISCLAIMER: The information and contents herein are as of 12 Dec 2024 and are provided on an "as is" and "as available" basis. While all reasonable care has been taken in preparing this eBook, the developer and its agents shall not be held responsible for any inaccuracies or the completeness of the information and contents herein. All renderings, illustrations, pictures, photographs and other graphic representations and references are artist's impression(s) only and may be subject to changes and deviation as further made by the developer or as required by the relevant authorities. Nothing herein shall form part of an offer or contract or be construed as any representations by the developer or its agents. The plans drawn herein may not be to scale, and the areas and measurements stated herein are approximate and are subject to adjustments on final survey.